

# EasyMark/EasyJewel

## Versatile Desktop Laser Marker

The EasyMark series is one of the most compact laser marking systems on the market. With its innovative and flexible housing design, the EasyMark can be adjusted precisely to individual applications – as well as being readily integrated into production lines as a Class 4 laser system. The supply and control units and the working chamber are designed as separate modules. The EasyMark is the laser marking solution for various production environments (semi and fully automated production), a wide range of applications and most different materials.



### FEATURES & BENEFITS

- Easy operation due to graphical user interface
- Spacious working chamber
- Low maintenance and service costs

### EasyJewel PACKAGE

- Ring Marking module RMM
- SmartView™ camera positioning
- On-The-Fly engraving

### OPTIONS

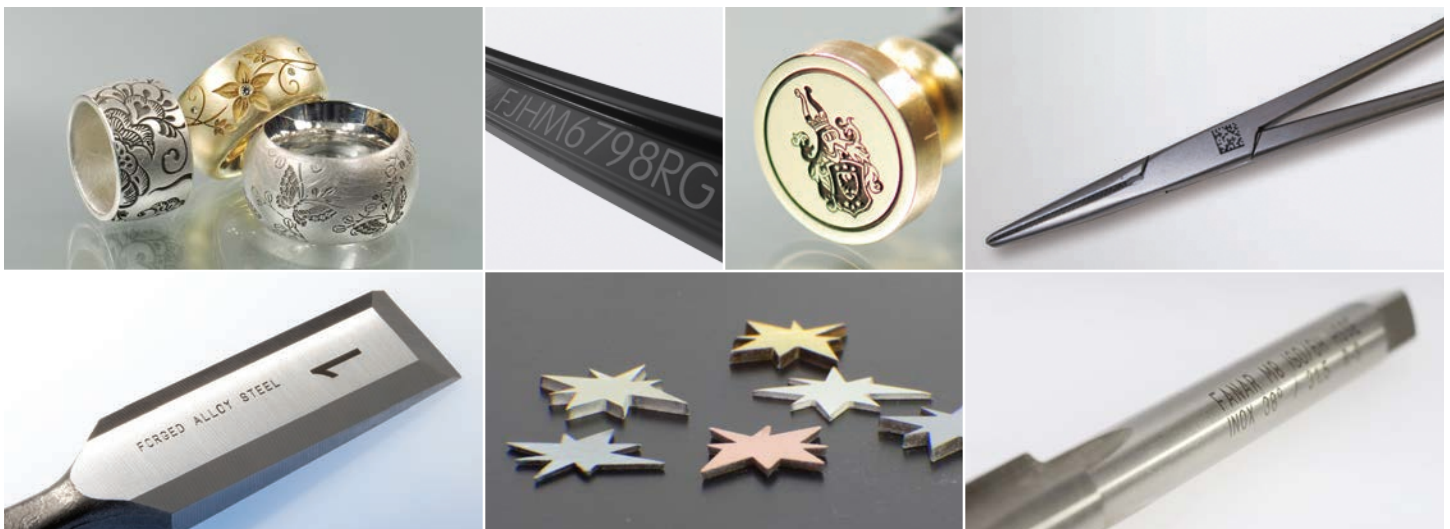
- Camera viewing systems
- Rotation axis
- Exhaust unit including remote start

### APPLICATIONS

- Marking
- Annealing
- Engraving
- Deep Engraving
- Cutting

OPTICAL SPECIFICATIONS	EasyMark F 20 Varia	EasyMark F 20	EasyMark F 50
Type	Fiber	Fiber	Fiber
Wavelength (nm)	1064	1070 ±5	1070 ±5
Pulse Frequency (kHz)	1.6 to 1000	20 to 100	50 to 200
Pulse Width (ns)	4 to 200	100	120
Nominal Power (W)	>18	>18	>48
Pilot Laser (nm)	660		
Z-AXIS			
Travel	120 mm (4.72 in.)		
WORKING CHAMBER			
Part Size	300 x 200 x 120 mm (11.8 x 7.9 x 4.7 in.)		
Maximum Marking Area 160 mm Objective	120 x 120 mm (4.7 x 4.7 in.)		
UTILITY			
Electrical (VAC)	100/240 ±10%		
Frequency (Hz)	50/60		
Operating Power (W)	400 (max.)	400 (max.)	600 (max.)
ENVIRONMENTAL			
Operational Temperature	+15 to +35°C (+59 to +95°F)		
DIMENSIONS			
Housing (L x W x H) 160 mm Objective	770 x 540 x 750 mm (30.3 x 21.3 x 29.5 in.)		
Weight	87 kg (192 lbs.)		

## APPLICATIONS



### Rotary Axis

- All-around marking made easy
- Synchronized rotation to mark cylindrical workpieces
- Easy set-up, plug and play

### SmartView™

- Camera assisted workpiece alignment
- Hit the workpiece precisely every time
- Perfect and easy alignment



## JEWELRY CONFIGURATION

### RMM: Ring Marking Module

- Unique, smart ring fixture for quick and easy inside or outside clamping

### OTF: On-The-Fly Marking

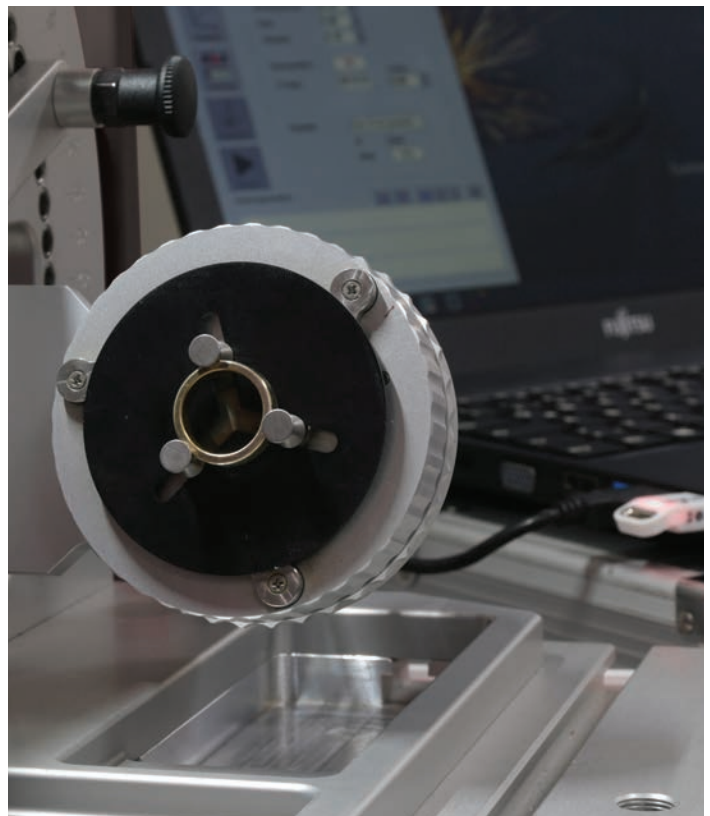
- Perfect deep engraving all around on rings

### Camera with SmartView™

- Positioning is supported by integrated camera

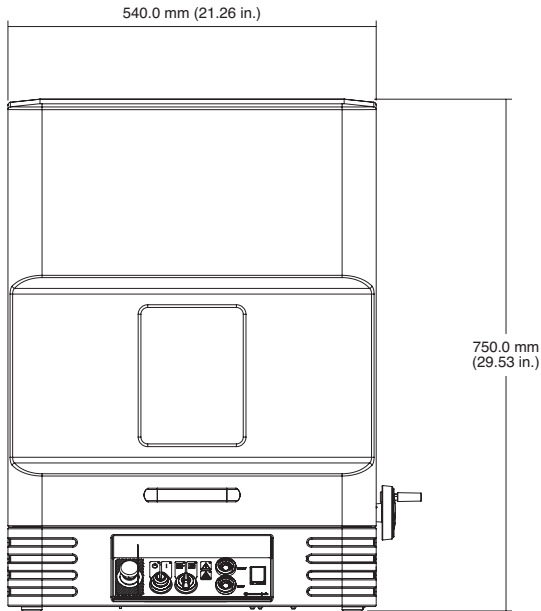
### EasyGUI

- Set-up of engraving jobs is supported by a software interface to make it easy to use

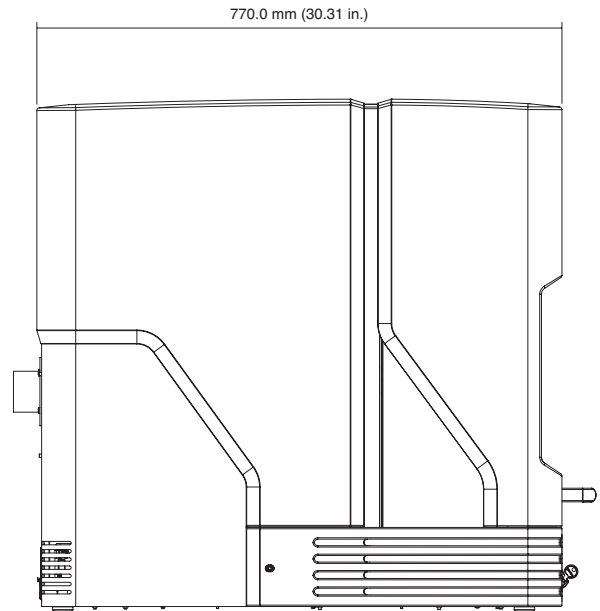


## MECHANICAL SPECIFICATIONS

### EasyMark/EasyJewel



Front View



Side View



Coherent, Inc.,  
5100 Patrick Henry Drive Santa Clara, CA 95054  
p. (800) 527-3786 | (408) 764-4983  
f. (408) 764-4646

[tech.sales@coherent.com](mailto:tech.sales@coherent.com) [www.coherent.com](http://www.coherent.com)

Coherent follows a policy of continuous product improvement. Specifications are subject to change without notice.  
Coherent offers a limited warranty for all EasyMark/EasyJewel Laser Markers. For full details of this warranty coverage, please refer to the Service section at [www.coherent.com](http://www.coherent.com) or contact your local Sales or Service Representative.  
MC-003-18-0M0919Rev.C Copyright ©2019 Coherent, Inc.

