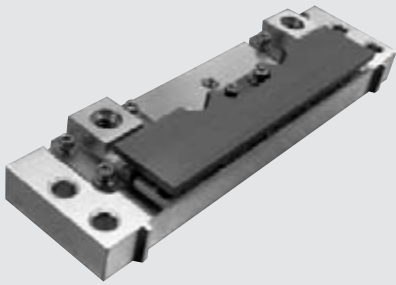


# PulseLife QCW Horizontal Array

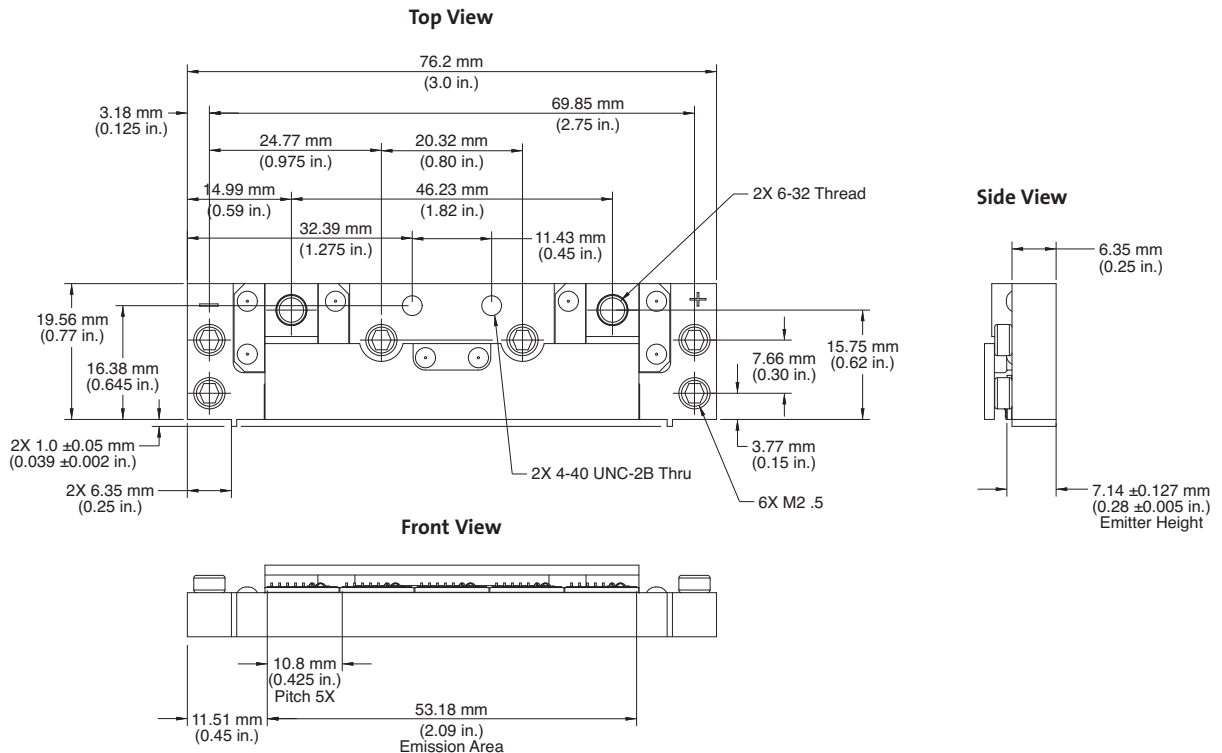
## Conduction-Cooled Horizontal Array



### Features

- Conduction-cooled 5-bar array with up to 1000W QCW output power
- Unique AAA™ (Aluminum-free Active Area) design for highest reliability and lifetime (>1e10 shots MTF)
- PulseLife™ hard-solder technology
- Low divergence option available

### Mechanical Specifications



**Superior Reliability & Performance**

# PulseLife™ QCW Horizontal Array

## Conduction-Cooled Horizontal Array

### Device Specifications

|   | 5-bar Arrays       |                    |
|---|--------------------|--------------------|
| QCW Output Power, Total (W)                               | 500                | 1000               |
| QCW Output Power per Bar (W)                              | 100                | 200                |
| Center Wavelength <sup>1</sup> (nm)                       | 808 ±3             | 808 ±3             |
| Wavelength Temperature Coefficient (nm/C)                 | 0.28               | 0.28               |
| Spectral Width <sup>1</sup> (FWHM)                        | <3                 | <4                 |
| Fast Axis Divergence (FWHM)                               | <35                | <26                |
| Slow Axis Divergence (FWHM)                               | <10                | <10                |
| Operating Current (A)                                     | <120 (109 typical) | <250 (225 typical) |
| Operating Voltage (V)                                     | <11                | <14                |
| Recommended Operating Temperature (°C)                    | 25                 | 25                 |
| Recommended Operating Temperature Range <sup>2</sup> (°C) | 15 to 35           | 15 to 35           |
| Storage Temperature Range <sup>2</sup> (°C)               | -30 to +60         | -30 to +60         |
| Intended Operation Mode                                   | QCW only           | QCW only           |

<sup>1</sup> At rated power and operating temperature.

<sup>2</sup> In clean dry air; non-condensing environment.

Coherent follows a policy of continuous product improvement. Specifications are subject to change without notice.

Coherent's scientific and industrial lasers are certified to comply with the Federal Regulations (21 CFR Subchapter J) as administered by the Center for Devices and Radiological Health on all systems ordered for shipment after August 2, 1976.

Coherent offers a limited warranty for all PulseLife arrays. For full details of this warranty coverage, please refer to the Service section at [www.Coherent.com](http://www.Coherent.com) or contact your local Sales or Service Representative.



[www.Coherent.com](http://www.Coherent.com)

**Coherent, Inc.**  
 5100 Patrick Henry Drive  
 Santa Clara, CA 95054  
 phone (800) 527-3786  
 (408) 764-4983  
 fax (800) 362-1170  
 (408) 988-6838  
 e-mail [tech.sales@Coherent.com](mailto:tech.sales@Coherent.com)

Benelux +31 (30) 280 6060  
 China +86 (10) 6280 0209  
 France +33 (0)1 6985 5145  
 Germany +49 (6071) 968 333  
 Italy +39 (02) 34 530 214  
 Japan +81 (3) 5635 8700  
 Korea +82 (2) 460 7900  
 UK +44 (1353) 658 833